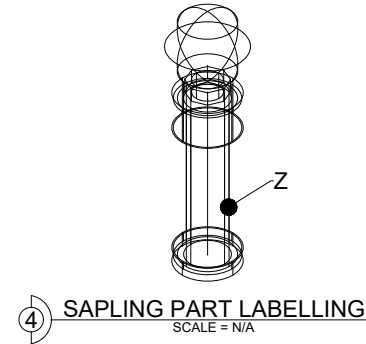
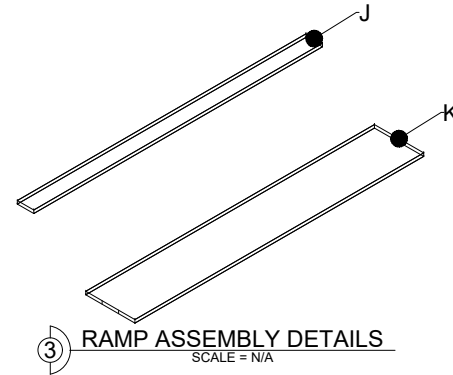
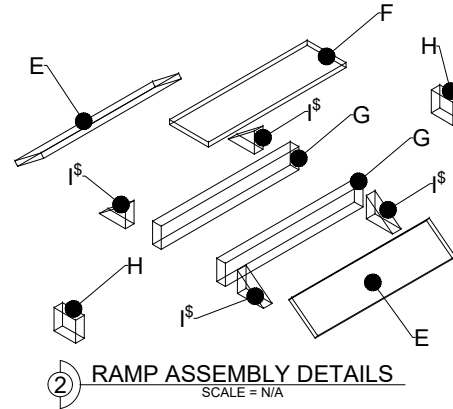
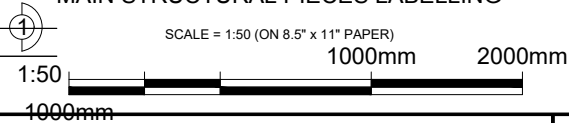


MAIN STRUCTURAL PIECES LABELLING



NOTES:

1. ALL MATERIALS LISTED ON ALL DRAWINGS REPRESENT INFORMATION AND DIMENSIONS FOR A FULL COURT AREA CONSISTING OF 2 TEAM COURT AREAS.
2. TEAM COURT AREAS ARE MIRRORED ALONG THE MIDDLE AXIS. DIMENSIONS ARE ALSO MIRRORED.

KEYNOTES:

\$ NOTED PIECES TO BE ANGLE CUT. SEE DIMENSIONS SHEET FOR DETAILS

-	-	-	-
0	ISSUED FOR SCOPE DOCUMENT	SM	JUL. 31/23
REV:	DESCRIPTION:	BY:	DATE:

REVISIONS

PROJECT:  
SCNC QUEBEC CITY 2024 - MOBILE ROBOTICS

SCNC\_RC\_2024\_3  
DRAWING NO.

T2024  
PROJECT NO.

07/31/23  
DATE.

DRAWING TITLE:  
PART LABELLING (1 OF 2)

AS NOTED  
SCALE AT A4.

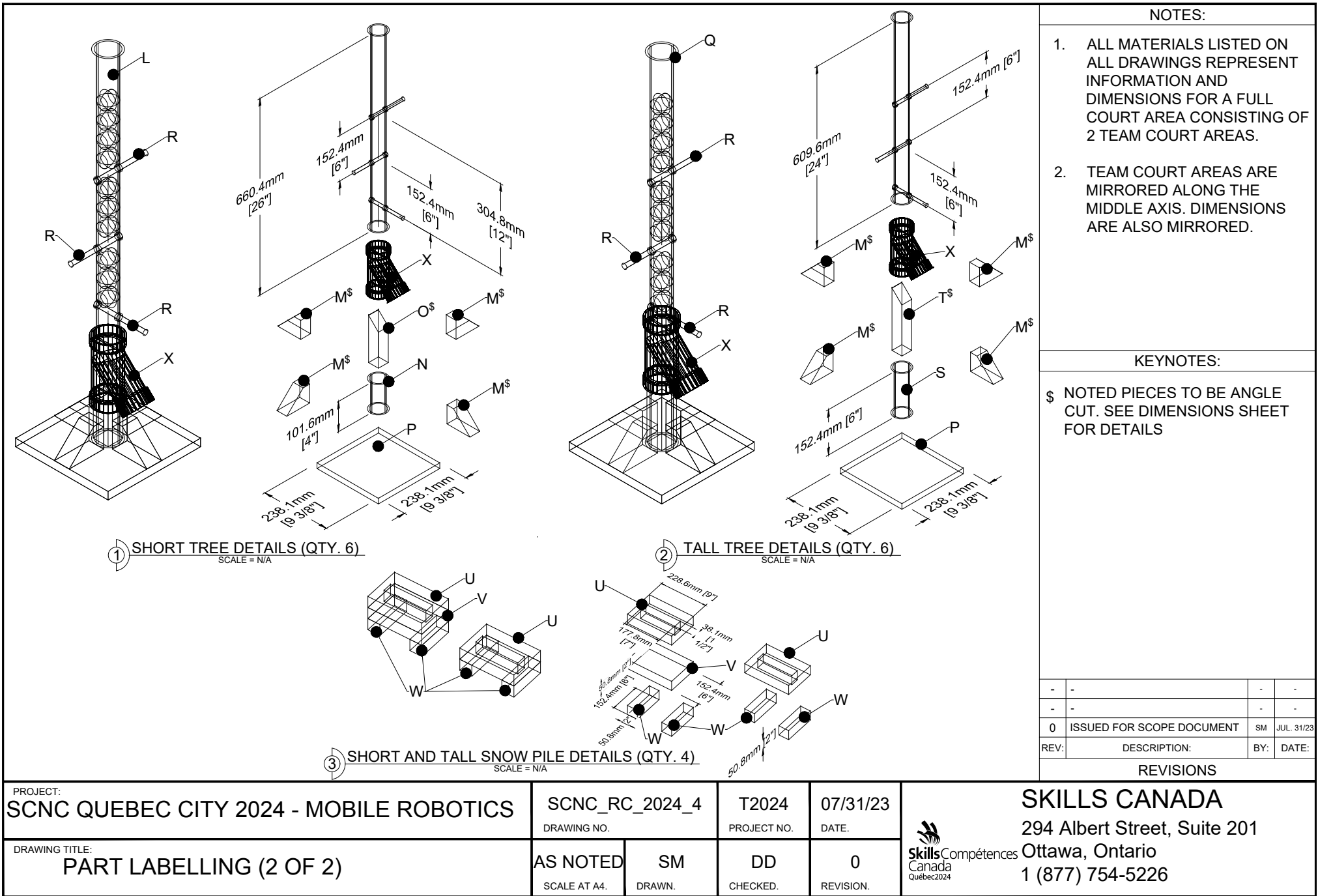
SM  
DRAWN.

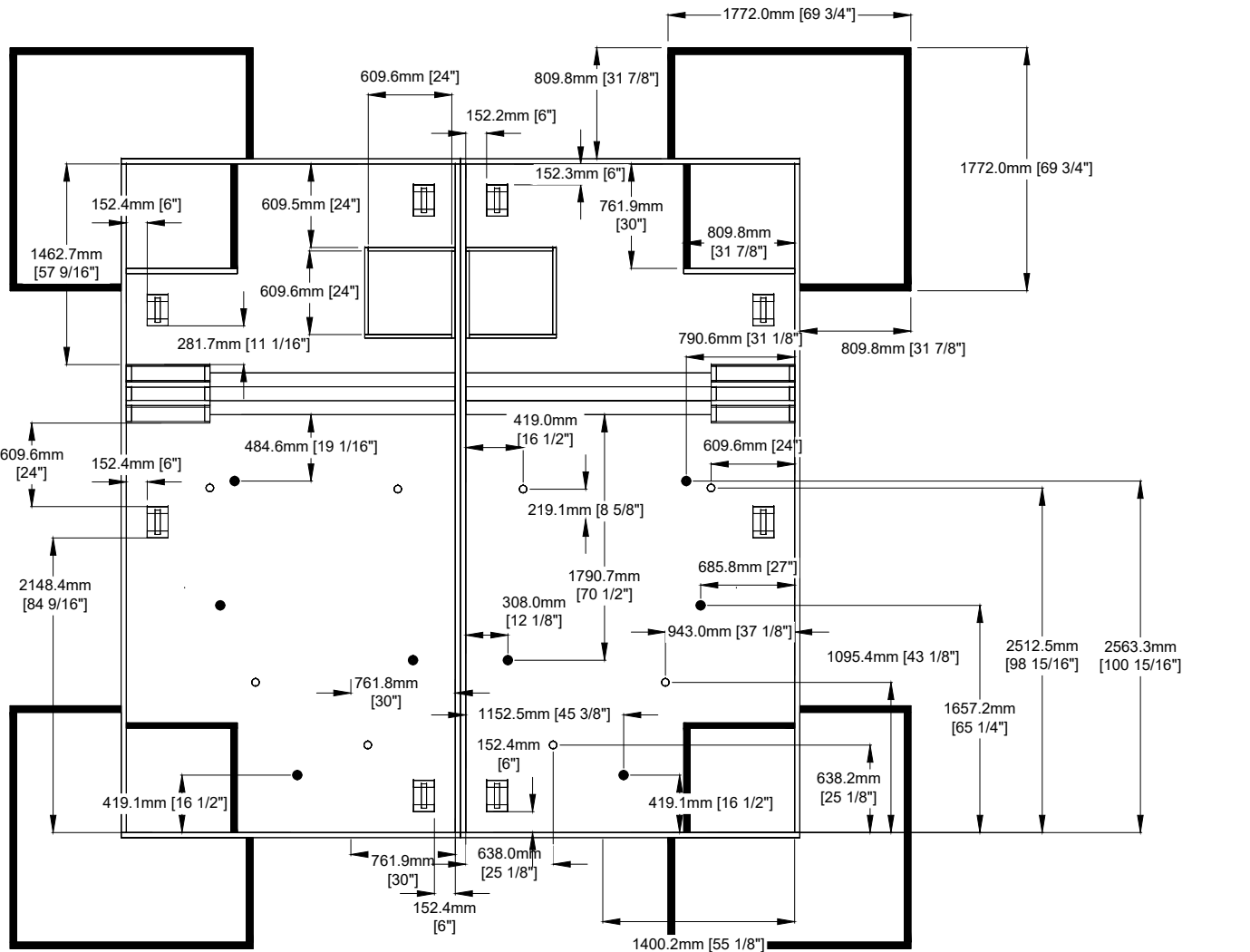
DD  
CHECKED.

0  
REVISION.



**SKILLS CANADA**  
294 Albert Street, Suite 201  
Ottawa, Ontario  
1 (877) 754-5226





1 MAIN COURT DIMENSIONS  
(ROUND ROBIN AND TOURNAMENT LAYOUTS)  
SCALE = 1:50 (ON 8.5" x 11" PAPER)

#### NOTES:

1. ALL MATERIALS LISTED ON ALL DRAWINGS REPRESENT INFORMATION AND DIMENSIONS FOR A FULL COURT AREA CONSISTING OF 2 TEAM COURT AREAS.
2. TEAM COURT AREAS ARE MIRRORED ALONG THE MIDDLE AXIS. DIMENSIONS ARE ALSO MIRRORED.
3. SEE OVERALL COURT AREA DRAWING FOR SPECIFIC TREE DIMENSION PLACEMENTS DEPENDING ON GAME TYPE.

-	-	-	-
0	ISSUED FOR SCOPE DOCUMENT	SM	JUL 31/23
REV:	DESCRIPTION:	BY:	DATE:

#### REVISIONS

PROJECT:  
SCNC QUEBEC CITY 2024 - MOBILE ROBOTICS

SCNC\_RC\_2024\_5  
DRAWING NO.

T2024  
PROJECT NO.

07/31/23  
DATE.

DRAWING TITLE:  
COURT DIMENSIONS

AS NOTED  
SCALE AT A4.

SM  
DRAWN.

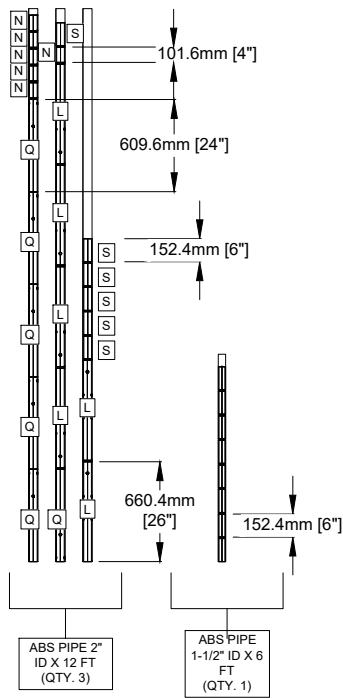
DD  
CHECKED.

0  
REVISION.

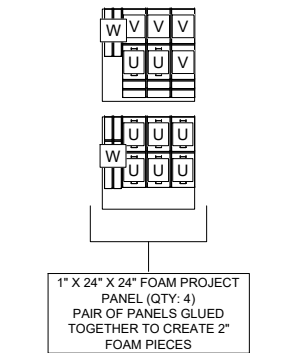


**SKILLS CANADA**  
294 Albert Street, Suite 201  
Ottawa, Ontario  
1 (877) 754-5226

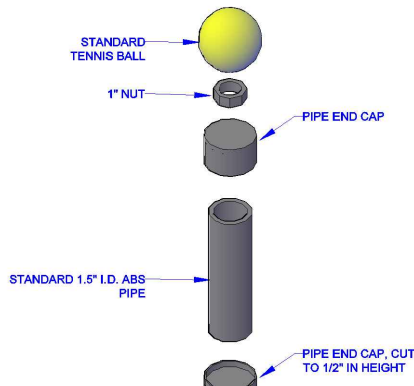




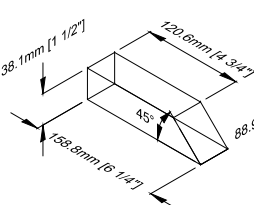
① **PIPE DETAILS**  
SCALE = 1:50 (ON 8.5" x 11" PAPER)



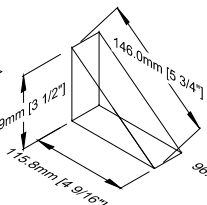
② **FOAM DETAILS**  
SCALE = 1:50 (ON 8.5" x 11" PAPER)



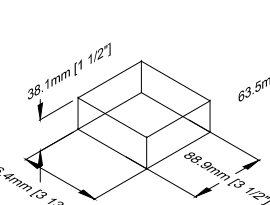
③ **POLE DETAILS**  
SCALE = N/A



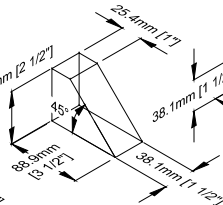
④ **O DIMENSIONS**  
SCALE = N/A



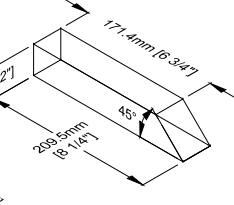
⑤ **I DIMENSIONS**  
SCALE = N/A



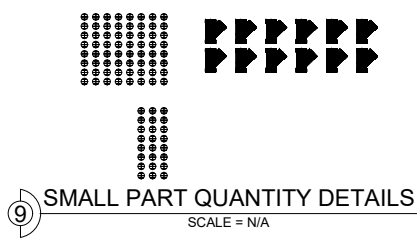
⑥ **H DIMENSIONS**  
SCALE = N/A



⑦ **M DIMENSIONS**  
SCALE = N/A



⑧ **T DIMENSIONS**  
SCALE = N/A



⑨ **SMALL PART QUANTITY DETAILS**  
SCALE = N/A

**NOTES:**

1. ALL MATERIALS LISTED ON ALL DRAWINGS REPRESENT INFORMATION AND DIMENSIONS FOR A FULL COURT AREA CONSISTING OF 2 TEAM COURT AREAS.
2. TEAM COURT AREAS ARE MIRRORED ALONG THE MIDDLE AXIS.
3. SEE OVERALL COURT AREA DRAWING FOR SPECIFIC TREE DIMENSION PLACEMENTS DEPENDING ON GAME TYPE.

-	-	-	-
0	ISSUED FOR SCOPE DOCUMENT	SM	JUL. 31/23
REV:	DESCRIPTION:	BY:	DATE:

**REVISIONS**

PROJECT:  
**SCNC QUEBEC CITY 2024 - MOBILE ROBOTICS**

SCNC\_RC\_2024\_7  
DRAWING NO.

T2024  
PROJECT NO.

07/31/23  
DATE.

DRAWING TITLE:  
**PART DIMENSIONS (2 OF 2)**

AS NOTED  
SCALE AT A4.

SM  
DRAWN.

DD  
CHECKED.

0  
REVISION.



**SKILLS CANADA**  
294 Albert Street, Suite 201  
Ottawa, Ontario  
1 (877) 754-5226

NOTES:

1. ALL MATERIALS LISTED ON ALL DRAWINGS REPRESENT INFORMATION AND DIMENSIONS FOR A FULL COURT AREA CONSISTING OF 2 TEAM COURT AREAS.

Description	Web Url	Quantity
2" x 6" x 16' Standard SPF Dimension Lumber	<a href="https://shorturl.at/lpr46">https://shorturl.at/lpr46</a>	4
2" x 6" x 10' Standard SPF Dimension Lumber	<a href="https://shorturl.at/ctATV">https://shorturl.at/ctATV</a>	5
2" x 4" x 8' Standard SPF Dimension Lumber	<a href="https://shorturl.at/suK67">https://shorturl.at/suK67</a>	4
2" x 2" x 8' Framing Lumber	<a href="https://shorturl.at/gHJOX">https://shorturl.at/gHJOX</a>	1
1/2" x 48" Round Wooden Dowel	<a href="https://tinyurl.com/wdwwel">https://tinyurl.com/wdwwel</a>	5
3/4" x 4' x 8' Standard Sheet of Plywood	<a href="https://tinyurl.com/5n7bkrrn">https://tinyurl.com/5n7bkrrn</a>	2
2" x 12' Cell Core ABS Pipe	<a href="https://tinyurl.com/12ftABSSC">https://tinyurl.com/12ftABSSC</a>	3
1-1/2" x 6' Cell Core ABS Pipe	<a href="https://tinyurl.com/732rn4d">https://tinyurl.com/732rn4d</a>	1
1" x 24" x 24" Foam Project Panel	<a href="https://tinyurl.com/433fx3kj">https://tinyurl.com/433fx3kj</a>	1
2" ABS 45 Degree Wye H x H x H	<a href="https://tinyurl.com/563fuzxs">https://tinyurl.com/563fuzxs</a>	12
1-1/2" ABS Slip On Test Cap	<a href="https://tinyurl.com/2m9bneuw">https://tinyurl.com/2m9bneuw</a>	24
Steel Hex Nut, Zinc Plated Finish, Grade 5, 1" - 8 Threads	<a href="https://tinyurl.com/42vyam3v">https://tinyurl.com/42vyam3v</a>	2
Tennis Balls + 1 Extra Set	<a href="https://tinyurl.com/ymewejta">https://tinyurl.com/ymewejta</a>	5
Foam Balls (qty. 12 in each pack)	<a href="https://tinyurl.com/2mmcn6t8">https://tinyurl.com/2mmcn6t8</a>	10
Red Foam Balls	<a href="https://tinyurl.com/redgolfball">https://tinyurl.com/redgolfball</a>	3

1 BILL OF MATERIALS  
SCALE = N/A

-	-	-	-
-	-	-	-
0	ISSUED FOR SCOPE DOCUMENT	SM	JUL. 31/23
REV:	DESCRIPTION:	BY:	DATE:

REVISIONS

PROJECT: SCNC QUEBEC CITY 2024 - MOBILE ROBOTICS	SCNC_RC_2024_8 DRAWING NO.	T2024 PROJECT NO.	07/31/23 DATE.
DRAWING TITLE: BILL OF MATERIALS	AS NOTED SCALE AT A4.	SM DRAWN.	DD CHECKED. 0 REVISION.



SKILLS CANADA  
294 Albert Street, Suite 201  
Ottawa, Ontario  
1 (877) 754-5226