



**2023**  
**25<sup>th</sup> ANNUAL SKILLS MANITOBA COMPETITION**  
**APRIL 13, 2023**  
**CONTEST DESCRIPTION**

**CONTEST NAME:** AESTHETICS

**CONTEST NO:** 30

**LEVEL:** INTEGRATED

**NOTE:** maximum of 10 competitors, 2 per school

**CONTEST LOCATION:** Red River College, Notre Dame Campus-North Gym

**CONTEST START TIME AND DURATION:**

Check-in: 7:30 am

Finish: 1:45 pm

**PURPOSE OF CHALLENGE:**

The principle function of an aesthetician is to give beauty care to persons with the main purpose of improving their appearance and providing people a physical and psychological well-being. By general means, the essential part of this work is to treat different parts of the body including specific care to skin care, specific care for the hands, and the application of makeup. All this while demonstrating professionalism and complying with occupational health and safety.

## **Aesthetics Criteria**

Please review the attached information prior to the competition.

Competitors will be judged on the following for all competitions:  
Sanitation, ethics, professional dress, attitude, behavior, conduct with model, posture,  
technique, application, finishing and total look.

### **Skills, Knowledge & Tasks**

#### **Facial:**

The competitor will demonstrate a facial that includes:

- Pre-service, service, post-service
- Examination/analysis of skin (including charting)
- Professional products suitable for the model
- Eye makeup and lipstick removal (**model must have natural lashes with visible mascara and red lipstick**)
- Cleansing & toning
- Exfoliation
- Hot towel application
- 15-minute facial and décolleté massage
- Mask (must be colored) during mask perform a 10-minute shoulder and arm massage
- Moisturizer & eye care
- Product application & removal.

#### **Manicure with Nail Art (permanent polish): See scope pg. 4**

The competitor will demonstrate a manicure that includes:

- Pre-service, service, post-service
- Competitor will demonstrate a dry manicure which includes nail shaping, cuticle work, hand and arm massage. (**natural nails only, no artificial nail extensions**)
- Permanent gel polish (**must be contrasting color of nail art**) will be applied to all 10 fingers with the one chosen design applied to all 5 fingers of one hand
- Nail art design must be equally applied to the 5 fingers of one hand
- Nail art must be done freehand using a dotter and/or short detailer brush. Primary colors, along with black and white may be used.
- 10-minute massage to the arm and hand.

#### **Creative Make-up Pop-Art Theme: See scope pg. 5**

The competitor will demonstrate makeup application:

- Pre-service, service, post-service
- Competitor will demonstrate a creative makeup look with a pop-art theme. The creative makeup will include the face and neck to the collar bone of the model
- Makeup should include primer and any professional makeup to create your entire pop-art look. The face, neck (to the collar bone) must be more than half covered with the pop-art design and include artificial lashes
- Posture & professionalism.

**\*\*\*Please note, order of steps is not specific to Skills Manitoba.**

### Facial

Time: 8:05-10:00am	<b>This component will be valued at 40%</b>
10 minutes	Treatment area and competitor prepared and organized
35 minutes	Model greeting and prepared for service; consultation and skin analyzed; mascara and lipstick removal; skin cleanse and removal; then toned
5 minutes	Checkpoint
10 minutes	Exfoliation and removal
5 minutes	Checkpoint
15 minutes	Face, neck and décolleté massage
20 minutes	Mask during mask must perform 10-minute shoulder and arm massage, finish with mask removal
5 minutes	Moisturizer and eye cream
10 minutes	Model exit and post-service clean up

### Makeup

Time: 10:15-11:45am	<b>This component will be valued at 30%</b>
10 minutes	Treatment area, competitor and model prepared for the service
60 minutes	Applies primer, concealer, foundation and setting powder Applies Pop-Art design to face, neck and collar bone Applies artificial lashes
10 minutes	Checkpoint
10 minutes	Model exit and post-service clean up

### Lunch 11:45-12:15 pm

#### **Manicure with permanent polish and nail art**

Time: 12:15-1:45pm	<b>This component will be valued at 30%</b>
10 minutes	Treatment area, competitor and model prepared for the service
15 minutes	Nails filed and shaped; cuticle work performed; buffing of nail performed
5 minutes	Checkpoint
10 minutes	Applies primer, basecoat and 2 coats of gel polish (no cleanup allowed) to all 10 nails
5 minutes	Checkpoint
20 minutes	Applies chosen design on 5 fingers of one hand (corrections allowed). Finish with topcoat
5 minutes	Checkpoint
10 minutes	Hand and arm massage
10 minutes	Model exit and post-service cleanup

**Nail Art:**

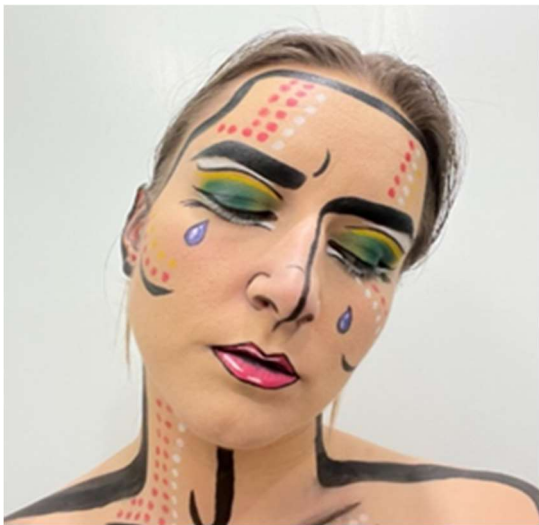
1. Paint all nails with permanent polish \*see scope
2. Proceed with contrasting color design. Colors may be customized if desired, using the primary, white and black gel polishes.
3. Competitors must try to recreate the look as close as possible to example \* colors may change to complement model.



### **Pop-Art Theme Makeup**

4. Apply primer, foundation and translucent powder to face, neck, and collar bone.
5. Apply pop-art theme to face, neck and collar bone. Application of artificial lashes required. The sequence of applying pop-art is the decision of the competitor, pictures below are examples.
6. Competitors must try to recreate the look as close as possible to example \* colors may change to complement model.

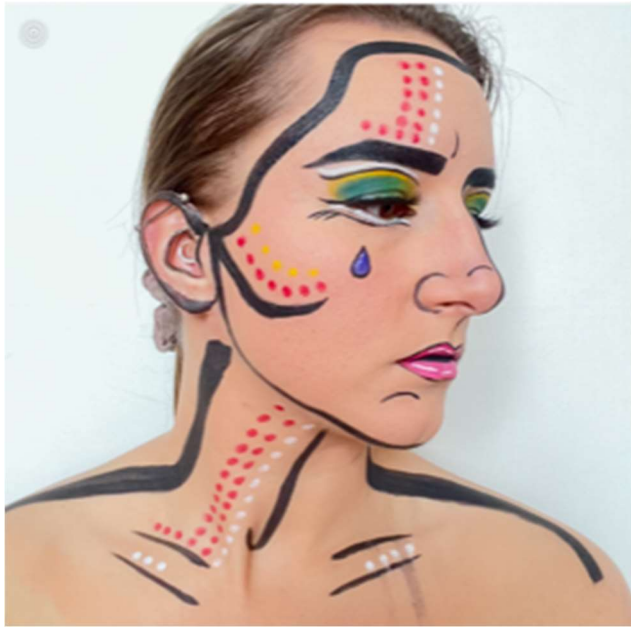




Updated February 6<sup>th</sup>, 2023









### Client Consultation Form

Date: \_\_\_\_\_

Name: \_\_\_\_\_

Main reason for visit: \_\_\_\_\_

Contraindications: Skin Diseases or Disorders, Medical Conditions, Including Pregnancy, Hypertension, use of acne drugs or topical peeling agents

Have you ever had a facial before? if yes, when \_\_\_\_\_

Do you have any skin concerns? \_\_\_\_\_

Do you have any of the following:

Dryness, Redness, Wrinkles, Sun damage, Acne, Blemishes, Oiliness, Peeling, Rough Texture, Pigmentation (dark or light)

Do you have any allergies or allergies to any ingredients? \_\_\_\_\_

Have you recently seen a dermatologist? \_\_\_\_\_

Have you had any recent surgeries, laser procedures, or strong exfoliation treatments? No

Type of treatment: \_\_\_\_\_

When: \_\_\_\_\_

Please list any medications you take: \_\_\_\_\_

Do you have any health issues or skin conditions? \_\_\_\_\_

What facial care products do you currently use? Soap, Toner, Moisturizer, Sunscreen, Masque, Night Cream, Eye Cream, Exfoliant (Scrub or Peel)

### Skin Analysis Chart

Skin Type: Dry Normal Oily Acne Combination

Conditions: \_\_\_\_\_ Facial Area: \_\_\_\_\_

Dehydrated: \_\_\_\_\_

Aging \_\_\_\_\_

Wrinkling \_\_\_\_\_

Sun Damage \_\_\_\_\_

Redness \_\_\_\_\_

Couperose \_\_\_\_\_

Pigmentation: \_\_\_\_\_

Hyper or Hypo: \_\_\_\_\_

Comedones (open or closed) \_\_\_\_\_

Milia \_\_\_\_\_

Hyperkeratinization \_\_\_\_\_

Psoriasis \_\_\_\_\_

Conditions: \_\_\_\_\_ Facial Area: \_\_\_\_\_

Poor Elasticity \_\_\_\_\_

Rosacea \_\_\_\_\_

Sensitivity \_\_\_\_\_

Oiliness \_\_\_\_\_

Acne-Grade 1 2 3 4 \_\_\_\_\_

Cysts \_\_\_\_\_

Papules/Pustules \_\_\_\_\_

Asphyxiated \_\_\_\_\_

Sunburn \_\_\_\_\_

Moles \_\_\_\_\_

Scarring \_\_\_\_\_

Other \_\_\_\_\_

### Skin Care Treatment Record

Notes: \_\_\_\_\_

Products Used: \_\_\_\_\_

Products Recommended: \_\_\_\_\_

### **EQUIPMENT, TOOLS, MATERIALS TO BE SUPPLIED BY COMPETITOR:**

- **Facial:** all necessary supplies and linens needed to perform the facial component (such as towels, hot cabbie, face chart, bowls/cups, mask brush, etc.)  
**Repechage facial products supplied by Spot On Beauty: cleanser, toner, exfoliator, massage cream, mask, moisturizer and eye cream. See pg. 10 for practice kit.**
- **Manicure:** all necessary supplies, linens and implements needed to perform manicure component (such as towels, disinfection, cuticle nippers, hand cream, etc.)  
Gel light, gel polishes (primary, white and black) and associated professional products to apply permanent polish supplied by the competitor
- **Makeup:** all necessary supplies needed for make-up application including accessories (such as makeup brushes, sponges, tweezers, etc.).  
All makeup (any professional medium) and artificial lashes supplied by competitor
- **Equipment:** All equipment needed to perform each component of the competition (such as facial bed, manicure table and chairs, makeup chair, step stool, etc.) supplied by the competitor
- Implement and surface disinfectant and sanitizing tray
- Hand sanitizing gel and spray bottle with alcohol
- Spatulas, stainless steel palette/knife, hand mirror
- Cotton swabs and rounds, tissue, gauze, Gibson towels
- Water pitcher and/or spray bottle
- Small covered garbage can or plastic sealant bag for trash and tape (to avoid overexposure of chemicals in work area), and a power cord
- Snack for model

### **WORKSITE SAFETY RULES / REQUIREMENTS:**

- All competitions will take place on live models. Competitors are responsible for supplying their own model and for the well-being of their model
- **Model must meet all component** criteria to ensure compliance with the rules and regulations
- A scrutineer at the start of each competition will examine all models. **No prep work permitted**
- No competitor shall continue to work on his/her model once the competition has ended
- Any infraction or violation of the competition rules will result in point penalties or disqualification
- Model must be dressed in clothing that allows competitor to perform components.

## General Competition Rules

- All competitors will **attend a mandatory orientation** meeting prior to the start of the competition. (7:45-7:55am).  
**Failure to attend orientation will lead to disqualification**
- All students **must** wear a professional uniform with **no** school logo on it (such as esthetics white lab coat with black dress pants or scrub top and pants **\*no leggings or yoga style pants**). Shoes must be closed toe
- Competitors who require clarification on instruction during the contest must address their questions to the Provincial Technical Chair or designate
- Competitors are not permitted to talk to persons who are not located within the contest area
- Interpreters will be allowed to access the contest site, if previous arrangements have been made with the Provincial Technical Chair or designate
- During the competition competitors may go to the restroom, only after informing a Provincial Technical Chair. Escorts to restroom will be at the discretion of the Provincial Technical Chair or designate
- Competitors must follow workplace safety rules and regulations as outlined during orientation
- Access to each contest site is reserved for the Provincial Technical Chair or designates, judges, competitors, and individuals that have been granted permission from the Provincial Technical Chair or designate
- All competitors shall allow the Skills Manitoba organization to take and publish photos of those individual competitors
- There must be a minimum of five registered competitors. If there are less than five registered competitors, Skills Manitoba delegates will re-evaluate the competition
- No competitor shall begin work until the start time is announced
- Competitors must be a Canadian citizen and reside in Manitoba
- Skills Manitoba will make every effort to accommodate persons with medical conditions or impairments. Please contact the Skills Manitoba office for details.

## **Provincial Competition Schedule**

Location: Red River College  
Notre Dame Campus – North Gym  
April 13th, 2023

<b>Time</b>	<b>Event</b>	<b>Location</b>
7:30-7:45 am	Check in and set up	Competition area
7:45-7:55 am	Orientation	Competition area
8:00-1:45 pm	Competition	Competition area
3:30-4:30 pm	Medal Presentations and Closing Remarks	Notre Dame Campus- South Gym

All large equipment may be brought into the competition area  
between 1:00-3:00pm April 12.

**Medals are awarded to the gold, silver and bronze winners.**

**Changes will be posted:** Please review the scopes on the website regularly and one week prior to the competition date to ensure you are aware of any changes. Additional information or changes will be posted on the Skills Canada Manitoba website if needed.

The Aesthetics Skills Manitoba Committee would like to thank you for showcasing the Esthetics profession in the Skills Manitoba Competition.

Skills Manitoba host over 40 Olympic style, industry sponsored competitions representing six sectors. The six sectors contain three different levels, which include secondary, post-secondary, and integrated (secondary and post-secondary combined),

Skills Manitoba is open to the public. This is a great opportunity for our industry to be viewed as a valuable and interesting career option.

**Note to all Competitors:** Competitors must always demonstrate safety throughout the competition and in the competition area. Competitors must wear safety equipment where applicable. Competitors must show concern for their client/model throughout the competition.

Website: [www.skillsmanitoba.ca](http://www.skillsmanitoba.ca)  
E-mail: [lorir@skillscanada.com](mailto:lorir@skillscanada.com)

**NATIONAL COMPETITION ELIGIBILITY:**

- A mark of **70% or higher** must be scored by the gold medalist in the Aesthetics contest in order to attend the Skills Canada National Competition.
- There is a national competition for Aesthetics held in Winnipeg, Manitoba **May 24<sup>th</sup>-27<sup>th</sup>, 2023. This is a non-qualifying year for the World Skills Competition.**
- **Please refer to the Skills Canada website for age eligibility for the national competition.**

**FOR MORE INFORMATION PLEASE CONTACT TECHNICAL COMMITTEE MEMBER:**

**Brenda Richer**  
Northlands Parkway Collegiate  
139 Northlands Parkway E.  
Winkler, Manitoba  
**204 325-9708**  
[Brenda.richer@gvsc.ca](mailto:Brenda.richer@gvsc.ca)

[Thank you to our Sponsor](#)














**Aurora, Ontario**  
**905.726.7768**

## 2023 Skills Manitoba Practice



Date: Feb 2, 2023

905-726-7768  
ordernow@SpotOnBeauty.ca

	Product	Unit Price	Count	Total
	100-RR11 Repechage T-Zone Balance Cleansing Complex (6oz./177ml/170 gm)	\$22.00	1	\$22.00
	100-RR12 Repechage T-Zone Balance Toning Complex (6 fl.oz./177ml)	\$22.00	1	\$22.00
	100-RR13 Repechage T-Zone Balance Moisture Complex (2oz./60ml /59gm)	\$23.20	1	\$23.20
	100-RR26A Repechage Honey and Almond Scrub (125ml/150gm/5oz.)	\$25.99	1	\$25.99
	100-SU13 Repechage Hydro-Moisture Masque for Dry Skin (8fl.oz./240gm)	\$55.70	1	\$55.70
	100-SU14 Repechage Balancing Hydrating Mask (8fl.oz./240ml)	\$46.40	1	\$46.40
	100-SU16 Repechage Honey and Almond Scrub (240ml/326gm/11.5 oz.)	\$46.40	1	\$46.40
	100-SU40 Repechage T-Zone Balance Cleansing Complex PRO (16oz./480 ml/460gm)	\$46.40	1	\$46.40
	100-SU41 Repechage T-Zone Balance Toning Complex (16fl.oz./470ml)	\$38.50	1	\$38.50
	100-SU43 Repechage T-Zone Balance Moisture Complex PRO (4fl.oz./120ml)	\$43.10	1	\$43.10
	100-SU54 Repechage Aqua Massage Cream For Normal to Oily Skin (8oz./227gm/240ml...)	\$42.40	1	\$42.40
<b>Total</b>			<b>11</b>	<b>\$0.00</b>

Student support for practice – 15% off on their purchase, and it goes 1 year around as a student program, **see attachment for detail**. Our 15% discount is on Repechage products and all our products and supplies. Here is the link to our PRO website: <https://www.spotonbeauty.ca/home3/products?brand=&category=>

You will need to provide proof of student identification and:

- Name
- Phone Number
- Email Address
- Shipping/Billing Address
- Payment



## "Student & Graduate Advantage" Initiative

Your future success in this wonderful industry will be determined by what steps you take from here. But, you will not be alone in your journey.

The outstanding school that you have chosen to help develop your skills, as well as the suppliers to the industry, are foundations of support for YOU.

Spot On Beauty has developed a program specific to students and recent graduates with the objective of assisting them on their journey. Whether you deploy your developing skills in a salon environment, start your own enterprise, pursue a teaching/training role or fulfill another related position (such as sales or retailing) we want to make your entry into the workplace as smooth, informed and cost effective as possible.

Attached to this letter you will find an application form that allows us to know more about you and ultimately track your development as a beauty industry professional. By completing this voluntary disclosure form you will be entered into our membership database which provides you with meaningful and targeted privileges such as but not limited to:

- 15% off purchases of regularly priced products until 12 months following graduation date
- access to preferred equipment, furniture packages and other starter kits
- access to our website for full understanding of the brands and products we carry plus our on-line training aids
- notification of new products and monthly brand specials
- notification of upcoming industry events and post-graduate education opportunities

We would like to thank you for committing yourself and your passion to this marvelous industry. We wish you much happiness and success with your exciting journey. We are proud to be able to assist you in any way we can with your needs now and in the future. As such please find attached an overview of the brands and products we carry as well as a description of who Spot On Beauty is.

We are excited about the future of our industry and particularly the energy and creativity that you will most certainly bring to all of us.

Sincerely,



Paul Langston  
President  
416-917-9927  
[Langston@bell.net](mailto:Langston@bell.net)